

Micropath[®] Corporation

2023 Montane Drive East
Golden, Colorado 80401-8099

• Tel: 303.526-5454
• Fax: 303.526-0202

• Web: www.micropath.com/
• E-Mail: sales@micropath.com

1-SECOND NED's FOR GLOBAL MAPPER – USA - \$250

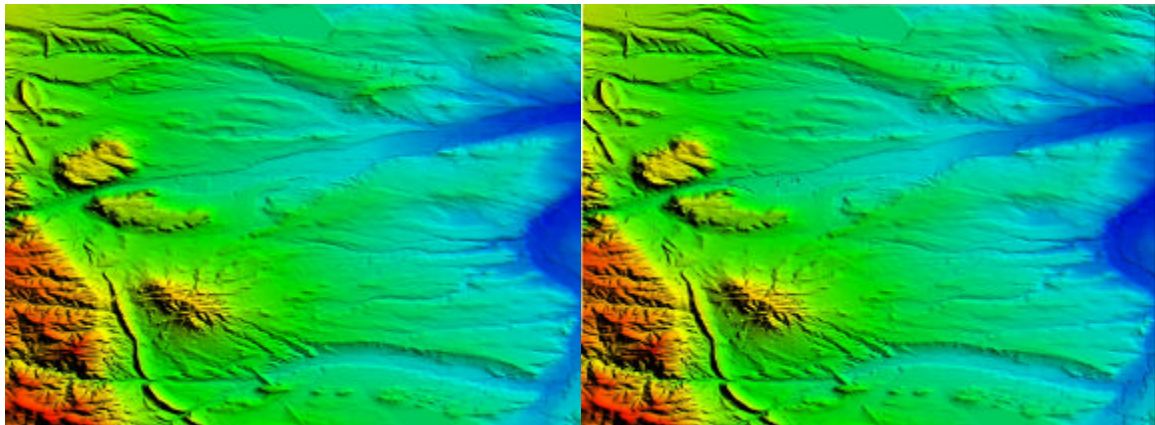
The 1-second NED elevation data may be imported into Global Mapper software. NED's are distributed on DVD and priced at \$250 for the entire USA. Media delivery is on two DVD's for the conterminous United States, Hawaii, and Puerto Rico. Alaska is distributed on a single CD-R.

The National Elevation Dataset (NED) is a seamless raster product derived primarily from USGS 30-meter and 10-meter Digital Elevation Models (DEMs), along with higher resolution data where available.

NED data for the conterminous United States, Hawaii, Puerto Rico, the Pacific Islands, and the Samoan Islands is expressed in geographic coordinates (latitude/longitude). It is horizontally referenced to the North American Datum of 1983 (NAD83) and vertically referenced to the North American Vertical Datum of 1988 (NAVD88). The resolution is one arc-second (approximately 30-meters). NED data is also available at 1/3 arc-second resolution (approximately 10-meters) for some areas of the conterminous United States.

NED data for Alaska is expressed in geographic coordinates (latitude/longitude). It is horizontally referenced to the North American Datum of 1927 (NAD27) and vertically referenced to the North American Vertical Datum of 1929 (NAVD29). The resolution is two arc-seconds (approximately 60-meters).

SHADED RELIEF MAP COMPARISON



1-Second NED

30-Meter DEM

PURCHASE 1-SECOND NED USA AND GLOBAL MAPPER

Micropath is an authorized reseller for Global Mapper: \$179.00 – Single User License

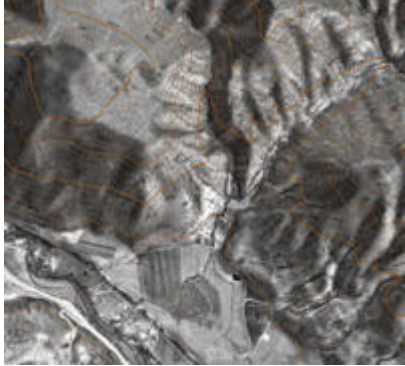
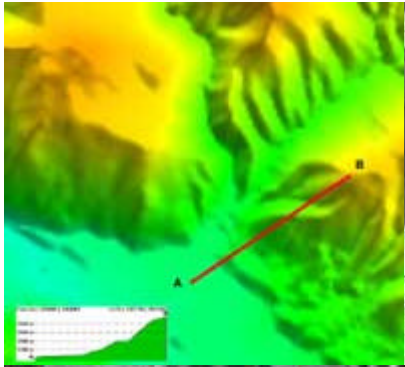
Micropath 1-Second NED For USA & Global Mapper: \$395.00 – Single User License

Shipping and sales tax to be added.

Download Global Mapper demonstration program at www.globalmapper.com.

Contact Micropath for sample NED files at support@micropath.com

Global Mapper is more than just a viewer capable of displaying the most popular raster, elevation, and vector datasets. It **converts, edits, prints,** and



allows you to utilize GIS functionality on your datasets in one low cost and easy to use software package. Your data files can be loaded as layers, for example a Digital Elevation Model (DEM) can be loaded with a scanned topographical

map to create a 3D sun shaded view of the map. A digital aerial image can be draped on the surface together with vector contour mapping to create a stunning and informative graphic. The results can be printed, or the workspace can be exported to a high resolution raster image for use in a presentation or report.

Have you ever received a dataset that does not match the projection of your current project? Simply load the dataset into Global Mapper, change the projection, and save the file to match your

coordinate system. If the dataset is larger than the area you are interested in, export the data using the crop feature and change the projection and format of the data at the same time.

Global Mapper is **more than just a utility**; it has built in functionality for distance and area calculations, **raster blending and contrast adjustment**, elevation querying and **line of sight** calculations as well as advanced capabilities like **image rectification, contour generation** from surface data, **view shed analysis** from surface data, and triangulation and gridding of 3D point data. Repetitive tasks can be accomplished using the built in scripting language or the numerous batch conversion options.

Quick Summary of Global Mapper Features

- Supports viewing of most of the popular data formats, including DLG-O, DRG, DOQ, DEM, DGN, DXF, SDTS DLG, SDTS DEM, ECW, MrSID, ESRI Shapefiles, E00, MapInfo MIF/MID, MapInfo TAB/MAP, GTOPO30, TerrainBase, SRTM, ETOPO2, ENVI DEM, JPG, PNG, BIL, BSQ, BIP etc.
- Support the latest DEM and SDTS DEM formats, including decimeter DEMs.
- Crop, reproject, and merge any combination of raster data, including DRGs.
- DIGITIZING SUPPORT! You can digitize new vector (area, line, and point) features by drawing them with the mouse. You can also edit existing vector features. Newly created and editing features can be saved to any of the supported export formats.
- EXPORT SUPPORT! You can export both vector, raster, and elevation data to a variety of formats (see below). You can merge any combination of data sets, regardless of source scale, type, and projection. See below for a list of supported export types.
 - Vector Data (i.e. DLG's, Shapefiles, DXF, etc.)

- AutoCAD DXF format
- ESRI Shapefile format
- Generic ASCII Text format
- InRoads ASCII format
- Landmark Graphics format
- MapGen format
- MapInfo MIF/MID format
- MatLab format
- NIMA ASC format
- Surfer BLN format
- SVG (Scalable Vector Graphic) format
- Tsunami OVR format
- USGS DLG-O format
- Raster Data (i.e. DRG's, DOQ's, etc.)
 - GeoTIFF format
 - JPG format
- Elevation Data (i.e. DEM's, etc.)
 - USGS DEM format
 - GeoTIFF DEM format
 - Surfer Grid (ASCII and binary) formats
 - XYZ ASCII Grid format
 - Arc ASCII Grid format
 - 3D DXF Mesh format
 - RockWorks Grid format
 - STL format
 - Terragen Terrain file format
 - VRML format
 - MapMaker Terrain file format
- IMAGE RECTIFICATION! You can graphically rectify (georeference) any JPG, TIFF, or PNG image and save the results to a new fully georeferenced image.
- CONTOUR GENERATION! You can create contours for any combination of elevation data. You can also specify the contour interval to use. The generated contour data can then be exported to any of the supported vector export formats (see previous item for a list).
- Automatic triangulation and gridding or 3D point data sets. This allows

you to convert a set of elevation samples into a fully gridded data set, which can then be used for contour generation, line of sight analysis, and view shed analysis, among other things. The data can also be exported to any of the supported elevation grid formats, such as USGS DEM.

- Advanced screen capture. You can capture the contents of the screen to a BMP, JPG, PNG, or (Geo)TIFF file of user-specified resolution.
- Batch conversion of SDTS DEM data files to native format USGS DEM data files.
- Batch conversion of SDTS DLG data to AutoCAD DXF files and ESRI Shapefiles.
- Auto-clip collar for DRG's. You can now have the collar of USGS DRG files automatically clipped off. This allows you to seamlessly view a collection of adjacent DRG files.
- Supports opening SDTS DLG and SDTS DEM files directly from .tar.gz archives. This saves the major headache of decompressing each SDTS transfer into a separate directory.
- Comprehensive view shed analysis using loaded elevation grid data from a user-specified location, transmitter height, and radius.
- 3D Path Profiling and Line of Sight (LOS) capabilities, including receiver/transmitter heights, minimum clearance, and earth curvature options.
- Supports opening DLG-O and DEM files directly from gzipped archives. This means that you can save space and hassle by not having to decompress the data after you download it.
- Slide over text. When you move your cursor around the screen you'll get a description of the nearest feature automatically displayed in the status bar.
- Supports keyboard navigation. You can pan about with the arrow keys and zoom in/out with the page up/page down keys.
- Search by name for all loaded vector data.
- **And more!**